



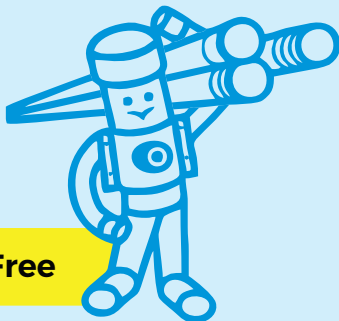
# SWR PIPES & FITTINGS

DURABLE AND WEATHER-PROOF PIPES FOR TRANSPORTATION OF SOIL,  
WASTE AND RAIN WATER APPLICATIONS

PRODUCT CATALOGUE



☎ 1800 200 3466 | 🌐 [finolexpipes.com](http://finolexpipes.com)



**Our Entire Product Range of Pipes & Fittings is now 100% Lead Free**

FINOLEX PIPES & FITTINGS



## SWR PIPES & FITTINGS



# SWR

## PIPES & FITTINGS



FINOLEX PIPES & FITTINGS

FINOLEX PIPES & FITTINGS

### A PREMIUM SOLUTION

Finolex SWR Pipes are a premium offering, manufactured using high-grade raw materials and the latest technology, making them ideal for non-pressurised drainage applications. These pipes are recommended for soil, waste and rainwater downtake, as well as for branch lines in both residential and industrial applications. Their ability to withstand temperatures compared to other plastic piping systems makes them a versatile choice for various buildings. The lightweight, non-corrosive and long-lasting nature of Finolex SWR pipes positions them as an excellent substitute for GI and conventional pipes.

### QUALITY ASSURANCE AND RELIABILITY

Finolex SWR pipes undergo stringent quality assurance across all stages of manufacturing, ensuring a high degree of reliability. This quality and reliability have made Finolex SWR one of the most preferred choices of leading MEP consultants, architects, builders, plumbing contractors, plumbers and quality-conscious individuals across the country. They are also approved by various institutes, such as CIPET.

### PIPE SPECIFICATIONS AND AVAILABILITY

SWR pipes are available in various sizes ranging from 75 mm to 160 mm, manufactured as per IS 13592 and offered with integrated Ringfit and Selfit socket systems. The pipes are categorized into type A for rainwater and vents and type B for soil and waste discharge.

### SWR FITTINGS

Fittings, manufactured as per IS 14735, are available in various sizes from 40 mm to 160 mm in Selfit and integrated ring type sockets.

# SWR PIPES WITH INTEGRATED RINGS

Confirming to IS 13592

Finolex SWR pipes facilitate easy installation as the integrated ring, pre-fitted in the socket groove and remains permanently positioned. The joint is created simply by pushing the spigot end into the socket end, without the use of any solvent cement. Finolex rubber lubricant should be used for easy insertion. The ring forms a leak-proof joint and absorbs the linear expansion and contraction, keeping the seal intact.

## DIMENSIONS OF SWR PIPES WITH INTEGRATED RINGS

Nominal Diameter (inch)	Nominal Diameter (mm)	Mean Outside Diameter of Pipe (mm)		Wall Thickness (mm)		Std. Length (meter)
		Min	Max	Min	Max	
Type A						
2½"	75	75.0	75.3	1.8	2.2	3,366,6
3"	90	90.0	90.3	1.9	2.3	3,366,6
4"	110	110.0	110.4	2.2	2.7	3,366,6
6"	160	160.0	160.5	3.2	3.8	3,6
Type B						
2½"	75	75.0	75.3	3.2	3.8	3,366,6
3"	90	90.0	90.3	3.2	3.8	3,366,6
4"	110	110.0	110.4	3.2	3.8	3,366,6
6"	160	160.0	160.5	4.0	4.6	3,6

## DIMENSIONS OF UVS / SWR PIPES WITH INTEGRATED RINGS

Nominal Diameter (inch)	Nominal Diameter (mm)	Mean Outside Diameter of Pipe (mm)		Wall Thickness (mm)		Std. Length (meter)
		Min	Max	Min	Max	
4"	110*	110.0	110.4	1.6	1.9	3

\*Note: Non ISI

CUT PIECES IN SWR PIPES WITH INTEGRATED RINGS - TYPE A			CUT PIECES IN SWR PIPES WITH INTEGRATED RINGS - TYPE B		
Size (inch)	Size (mm)	Std. Length per piece (ft)	Size (inch)	Size (mm)	Std. Length per piece (ft)
2½"	75	2	2½"	75	1.5
2½"	75	3	2½"	75	2
2½"	75	4	2½"	75	3
2½"	75	6	2½"	75	4
2½"	75	9	2½"	75	6
2½"	75	10	2½"	75	10
2½"	75	20	2½"	75	20
3"	90	2	3"	90	2
3"	90	3	3"	90	3
3"	90	4	3"	90	4
3"	90	6	3"	90	6
3"	90	10	3"	90	10
3"	90	20	3"	90	20
4"	110	2	4"	110	1.5
4"	90	3	4"	110	2
4"	110	4	4"	110	3
4"	110	6	4"	110	4
4"	110	9	4"	110	6
4"	110	10	4"	110	9
4"	110	20	4"	110	10
6"	110	2	4"	110	20
6"	160	3	6"	160	2
6"	160	4	6"	160	3
6"	160	6	6"	160	4
6"	160	10	6"	160	6
6"	160	20	6"	160	10
			6"	160	20

Note: This cut piece length can be made available with single socket (S/S) and double socket (D/S).



# SWR SELFIT PIPES

Confirming to IS 13592

Finolex Selfit SWR pipes are manufactured in a way that one end of the pipe is plain and the other self-socketed, facilitating easy jointing with the use of Finolex Solvent Cement.

## DIMENSIONS OF SWR SELFIT PIPES

Nominal Diameter (inch)	Nominal Diameter (mm)	Mean Outside Diameter of Pipe (mm)		Wall Thickness (mm)		Std. Length (meter)
		Min	Max	Min	Max	
Type A						
2½"	75	75.0	75.3	1.8	2.2	3,6
3"	90	90.0	90.3	1.9	2.3	3,3.66,6
4"	110	110.0	110.4	2.2	2.7	3,3.66,5,6
6"	160	160.0	160.5	3.2	3.8	3,6
Type B						
1¼"	40	40.0	40.3	3.2	3.8	3
2½"	75	75.0	75.3	3.2	3.8	3,6
3"	90	90.0	90.3	3.2	3.8	3,6
4"	110	110.0	110.4	3.2	3.8	3,3.66,5,6
6"	160	160.0	160.5	4.0	4.6	3,6

### BATCH NUMBER LOGIC:

Year	Month	Day	Mc.No.	Shift	Die No./ Location
XXXX	XX	XX	XXX	X	X/XX

For example, the batch number of pipes produced on  
Mc. no. 20 on 1st June 2021 in the 1st shift will be 202106010201 U

CUT PIECES IN SWR SELFIT PIPES - TYPE A		
Size (inch)	Size (mm)	Std. Length per piece (ft)
2½"	75	2
2½"	75	3
2½"	75	4
2½"	75	6
2½"	75	10
3"	90	2
3"	90	3
3"	90	4
3"	90	6
3"	90	10
3"	90	20
4"	110	2
4"	110	3
4"	110	4
4"	110	6
4"	110	10
4"	110	20
6"	160	2
6"	160	3
6"	160	4
6"	160	6

CUT PIECES IN SWR SELFIT PIPES - TYPE B		
Size (inch)	Size (mm)	Std. Length per piece (ft)
2½"	75	2
2½"	75	3
2½"	75	4
2½"	75	6
2½"	75	10
2½"	75	20
3"	90	2
3"	90	3
3"	90	4
3"	90	6
3"	90	10
3"	90	20
4"	110	2
4"	110	3
4"	110	4
4"	110	6
4"	110	10
4"	110	20
6"	160	2
6"	160	3
6"	160	4
6"	160	6
6"	160	10
6"	160	20

Note: This cut piece length can be made available with single socket (S/5) and double socket (D/5).



## SWR FITTINGS WITH INTEGRATED RINGS AT A GLANCE

IRR (As per IS 14735)	
Type of Fittings	Size in inch
COUPLER	75 to 160
BEND 87.5° - PLAIN	75 to 160
BEND 87.5° - DOOR	75 to 160
BEND 45° - PLAIN	75 to 160
BEND - SIDE DOOR LEFT HAND	110
BEND - SIDE DOOR RIGHT HAND	110
TEE - PLAIN	75 to 160
TEE - DOOR	75 to 160
TEE - SIDE DOOR LEFT HAND	75 to 110
TEE - SIDE DOOR RIGHT HAND	75 to 110
CROSS TEE - PLAIN	75 to 160
CROSS TEE - DOOR	75 to 160
CLEANING PIPE	75 to 160
REDUCER	90 to 160
REDUCING TEE - PLAIN	90 to 160
REDUCING TEE - DOOR	90 to 160

IRR (As per IS 14735)	
Type of Fittings	Size in inch
REDUCING TEE - SIDE DOOR LEFT HAND	110
REDUCING TEE - SIDE DOOR RIGHT HAND	110
SWEPT TEE - PLAIN	75 to 160
SWEPT TEE - DOOR	75 to 160
REDUCING SWEPT TEE - PLAIN	110 X 75
REDUCING SWEPT TEE - DOOR	110 X 75
SINGLE Y - PLAIN	75 to 160
SINGLE Y - DOOR	75 to 160
SINGLE Y - SIDE DOOR LEFT HAND	110
SINGLE Y - SIDE DOOR RIGHT HAND	110
DOUBLE Y - PLAIN	75 to 160
DOUBLE Y - DOOR	75 to 160
REDUCING Y - PLAIN	110 to 160
REDUCING Y - DOOR	110 to 160
PAN CONNECTOR	110

## SWR SELFIT FITTINGS AT A GLANCE

SELFIT (As per IS 14735)	
Type of Fittings	Size in inch
COUPLER	63 to 160
BEND 87.5° - PLAIN	50 to 160
BEND 87.5° - DOOR	50 to 160
BEND 45° - PLAIN	40 to 160
TEE - PLAIN	50 to 160
TEE - DOOR	50 to 160
TEE - DOOR DOUBLE SOCKET	63 to 110
CROSS TEE - PLAIN	75 to 110
CLEANING PIPE	75 to 160
REDUCER	110 to 160
REDUCING BUSH	160 X 110
REDUCING TEE - PLAIN	90 to 160
REDUCING TEE - DOOR	90 to 160
SWEPT TEE - PLAIN	75 to 110
SWEPT TEE - DOOR	75 to 110
SINGLE Y - PLAIN	63 to 160
SINGLE Y - DOOR	63 to 160
DOUBLE Y - PLAIN	75 to 160
DOUBLE Y - DOOR	160
REDUCING Y - PLAIN	110 to 160
REDUCING Y - DOOR	110 to 160
SQ. GULLY TRAP WITH JALI/ W/O JALI	110
NAHANI TRAP - W/O JALI SINGLE PIECE	110
NAHANI TRAP - W/O JALI SHORT	110
NAHANI TRAP - JALI (Only JALI)	110
PIPE CLIP	75 to 160
VENT COWL	50 to 160
DOOR CAP	75 to 160

SELFIT (As per IS 14735)	
Type of Fittings	Size in inch
TEE - PLAIN DOUBLE SOCKET	40 to 110
BEND 45° - DOUBLE SOCKET	75 to 110
BEND DOUBLE SOCKET - PLAIN	40 to 110
BEND DOUBLE SOCKET - DOOR	40 to 110
EQUAL Y - PLAIN	50
EQUAL Y - DOOR	50
REVERSE Y - PLAIN	75
REVERSE Y - DOOR	75
GULLY TRAP - SINGLE	160 X 110
GULLY TRAP - DOUBLE	160 X 110
HEIGHT RISER 6"	110
MULTI FLOOR TRAP WITH JALI	110X75
MULTI FLOOR TRAP WITHOUT JALI	110X75
MULTI FLOOR TRAP SQUARE JALI	110
MULTI FLOOR TRAP 7" HEIGHT	110X75
FLOOR TRAP	110
P - TRAP	75 to 125
Q - TRAP	110 to 125
S - TRAP	110 to 125
WC CONNECTER	110
WC CONNECTER - BEND	125X110
WC CONNECTER - STRAIGHT	125X110
SOCKET PLUG	75 to 110
NAHANI TRAP WITH JALI	110x63
REDUCING BUSH ( ECCENTRIC )	110x75



# SWR FITTINGS WITH INTEGRATED RINGS



**COUPLER**  
To join two lengths of pipes

mm	75	90	110	160
inch	2½"	3"	4"	6"



**BEND 87.5° - PLAIN**  
To collect waste water from the internal pipeline and divert it to the main pipeline at an angle of 87.5

mm	75	90	110	160
inch	2½"	3"	4"	6"



**BEND 87.5° - DOOR**  
To collect wastewater from the internal pipeline and divert it to the main pipeline at an angle of 87.5°. Available with a door for cleaning purposes

mm	75	90	110	160
inch	2½"	3"	4"	6"



**BEND 45° - PLAIN**  
Used as a shoe for a rainwater drainage line and can also provide a 45° turn to the pipeline

mm	75	90	110	160
inch	2½"	3"	4"	6"



**TEE - SIDE DOOR LEFT HAND**  
Available with a door for cleaning purposes.

mm	75	110
inch	2½"	4"



**TEE - SIDE DOOR RIGHT HAND**  
Available with a door for cleaning purposes. (Right hand)

mm	75	110
inch	2½"	4"



**CROSS TEE - PLAIN**  
To connect two lateral soil/waste pipelines to the main line at an angle of 87.5°

mm	75	90	110	160
inch	2½"	3"	4"	6"



**CROSS TEE - DOOR**  
To connect two lateral soil/waste pipelines to the main line at an angle of 87.5°. Available with a door for cleaning purposes

mm	75	90	110	160
inch	2½"	3"	4"	6"



### BEND - SIDE DOOR LEFT HAND

Available with a door for cleaning purposes. (Left hand)

mm	110
inch	4"



### CLEANING PIPE

Used between a vertical line to facilitate cleaning and pipe maintenance

mm	75	110	160
inch	2½"	4"	6"



### BEND - SIDE DOOR RIGHT HAND

Available with a door for cleaning purposes. (Right hand)

mm	110
inch	4"



### REDUCER

To reduce the main line

mm	90X75	110X75	110X90	160X110
inch	3" x 2½"	4" x 2½"	4" X 3"	6" X 4"



### TEE - PLAIN

To connect a lateral soil/waste pipe to the main vertical pipe at an angle of 87.5°

mm	75	90	110	160
inch	2½"	3"	4"	6"



### REDUCING TEE - PLAIN

To connect a reducing soil/waste pipeline to the main P ipeline at an angle of 87.5°

mm	90X75	110X75	160X110
inch	3" x 2½"	4" x 2½"	6" X 4"



### TEE - DOOR

To connect a lateral soil/waste pipe to the main vertical pipe at an angle of 87.5°. Available with a door for cleaning purposes

mm	75	90	110	160
inch	2½"	3"	4"	6"



### REDUCING TEE - DOOR

To connect a reducing soil/waste pipeline to the main pipeline at an angle of 87.5° Available with a door for cleaning purposes

mm	90X75	110X75	160X110
inch	3" x 2½"	4" x 2½"	6" X 4"



### REDUCING TEE - SIDE DOOR LEFT HAND

Available with a door for cleaning purposes. (Left hand)

mm	110X75
inch	4" x 2½"



### SINGLE Y - DOOR

To connect a branch soil/waste pipeline to the main vertical pipeline at an angle of 45°. Available with a door for cleaning purposes

mm	75	90	110	160
inch	2½"	3"	4"	6"



### REDUCING TEE - SIDE DOOR RIGHT HAND

Available with a door for cleaning purposes. (Right hand)

mm	110X75
inch	4" x 2½"



### SINGLE Y - SIDE DOOR LEFT HAND

To connect two lateral soil/waste pipelines to the main vertical line at an angle of 45°. Available with a side door for cleaning purposes. (Left hand)

mm	110
inch	4"



### SWEPT TEE - PLAIN

To connect a lateral soil/waste pipe to the main vertical line

mm	75	110	160
inch	2½"	4"	6"



### SINGLE Y - SIDE DOOR RIGHT HAND

To connect two lateral soil/waste pipelines to the main vertical pipeline at an angle of 45°. Available with a side door for cleaning purposes. (Right hand)

mm	110
inch	4"



### SWEPT TEE - DOOR

To connect a lateral soil/waste pipe to the main vertical line. Available with a door for cleaning purposes

mm	75	110	160
inch	2½"	4"	6"



### DOUBLE Y - PLAIN

To connect a branch soil/waste pipeline to the main vertical pipeline at an angle of 45°

mm	75	90	110	160
inch	2½"	3"	4"	6"



### REDUCING SWEPT TEE - PLAIN

To connect, reduce a lateral soil/waste pipe to the main vertical line

mm	110X75
inch	4" x 2½"



### DOUBLE Y - DOOR

To connect a branch soil/waste pipeline to the main vertical pipeline at an angle of 45°. Available with a door for cleaning purposes

mm	75	90	110	160
inch	2½"	3"	4"	6"



### REDUCING SWEPT TEE - DOOR

To connect, reduce a lateral soil/waste pipe to the main vertical line. Available with a door for cleaning

mm	110X75
inch	4" x 2½"



### REDUCING Y - PLAIN

To connect a reducing soil/waste pipeline to the main pipeline at an angle of 45°

mm	110X75	160X110
inch	4" x 2½"	6" x 4"



### SINGLE Y - PLAIN

To connect a branch soil/waste pipeline to the main vertical pipeline at an angle of 45°

mm	75	90	110	160
inch	2½"	3"	4"	6"



### REDUCING Y - DOOR

To connect a reducing soil/waste pipeline to the main pipeline at an angle of 45°. Available with a door for cleaning purposes

mm	110X75	160X110
inch	4" x 2½"	6" x 4"

# SWR SELFIT FITTINGS



### COUPLER

To join two lengths of pipes

mm	63	75	90	110	160
inch	2"	2½"	3"	4"	6"



### BEND 87.5° - PLAIN

To collect wastewater from the internal pipeline and to divert it to the main pipeline at an angle of 87.5°

mm	50	63	75	90	110	160
inch	1½"	2"	2½"	3"	4"	6"



### BEND 87.5° - DOOR

To collect waste water from the internal pipeline and to divert it to the main pipeline at an angle of 87.5°. Available with a door for cleaning purposes

mm	50	63	75	90	110	160
inch	1½"	2"	2½"	3"	4"	6"



### TEE - DOOR

Available with a door for cleaning purposes. (Left hand)

mm	50	63	75	90	110	160
inch	1½"	2"	2½"	3"	4"	6"



### TEE - PLAIN DOUBLE SOCKET

To connect a lateral soil/waste pipe to the main vertical pipe at an angle of 87.5°

mm	40	50	63	75	90	110
inch	1¼"	1½"	2"	2½"	3"	4"



### TEE - DOOR DOUBLE SOCKET

To connect a lateral soil/waste pipe to the main vertical pipe at an angle of 87.5°. Available with a door for cleaning purposes

mm	63	75	90	110
inch	2"	2½"	3"	4"







### BEND 45° - PLAIN

Used as a shoe for a rainwater drainage line and can also provide a 45° turn to the pipeline

mm	40	50	63	75	90	110
inch	1½"	1½"	2"	2½"	3"	4"
mm	140	160				
inch	5"	6"				



### CROSS TEE - PLAIN

To connect two lateral soil/waste pipelines to the main line at an angle of 87.5°

mm	75	110
inch	2½"	4"



### BEND 45°- DOUBLE SOCKET

Used as a shoe for a rainwater drainage line and can also provide a 45° turn to the pipeline

mm	75	110
inch	2½"	4"



### CLEANING PIPE

Used between a vertical line to facilitate cleaning and pipe maintenance

mm	75	110	160
inch	2½"	4"	6"



### BEND DOUBLE SOCKET - PLAIN

To collect wastewater from the internal pipeline and divert it to the main pipeline. Bend is provided with an inner socket at both ends

mm	40	50	63	75	90	110
inch	1½"	1½"	2"	2½"	3"	4"



### REDUCER

To reduce the main line

mm	110X75	110X90	160X110
inch	4" x 2½"	4" x 3"	6" x 4"



### BEND DOUBLE SOCKET - DOOR

To collect wastewater from the internal pipeline and divert it to the main pipeline. Bend is provided with an inner socket at both ends and is available with a door for cleaning purposes

mm	40	63	75	90	110
inch	1½"	2"	2½"	3"	4"



### REDUCING BUSH

To reduce the internal diameter of fittings

mm	160X110
inch	6" x 4"



### TEE - PLAIN

To connect a lateral soil/waste pipe to the main vertical pipe at an angle of 87.5°

mm	50	63	75	90	110	160
inch	1½"	2"	2½"	3"	4"	6"



### REDUCING TEE - PLAIN

To connect a reducing soil/waste pipeline to the main pipeline at an angle of 87.5°

mm	90X75	110X75	160X110
inch	3" x 2½"	4" x 2½"	6" x 4"



### REDUCING TEE - DOOR

To connect a reducing soil/waste pipeline to the main pipeline at an angle of 87.5°. Available with a door for cleaning purposes

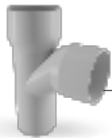
mm	90X75	110X75	160X110
inch	3" x 2½"	4" x 2½"	6" x 4"



### REDUCING Y - PLAIN

To connect a reducing soil/waste pipeline to the main pipeline at an angle of 45°

mm	110X75	160X110
inch	4" x 2½"	6" x 4"



### SWEPT TEE - PLAIN

To connect a lateral soil/waste pipe to the main vertical line

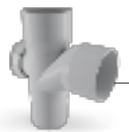
mm	75	110
inch	2½"	4"



### REDUCING Y - DOOR

To connect a reducing soil/waste pipeline to the main pipeline at an angle of 45°. Available with a door for cleaning purposes

mm	110X75	160X110
inch	4" x 2½"	6" x 4"



### SWEPT TEE - DOOR

To connect a lateral soil/waste pipe to the main vertical line. Available with a door for cleaning purposes

mm	75	110
inch	2½"	4"



### REVERSE Y - PLAIN

To connect two branches at an inverted angle of 45°

mm	75
inch	2½"



### SINGLE Y - PLAIN

To connect a branch soil/waste pipeline to the main vertical pipeline at an angle of 45°

mm	63	75	90	110	160
inch	2"	2½"	3"	4"	6"



### REVERSE Y - DOOR

To connect two branches at an inverted angle of 45°. Available with a door for cleaning purposes

mm	75
inch	2½"



### SINGLE Y - DOOR

To connect a branch soil/waste pipeline to the main vertical pipeline at an angle of 45°. Available with a door for cleaning purposes

mm	63	75	90	110	160
inch	2"	2½"	3"	4"	6"



### GULLY TRAP - SINGLE

To prevent foul odours emitted from the sewer from reaching buildings and apartments

mm	160X110
inch	6" x 4"



**EQUAL Y - PLAIN**

To connect a branch soil/waste pipeline to the main vertical pipeline at an angle of 45°. Available with a door for cleaning purposes

mm	50
inch	1½"



**EQUAL Y - DOOR**

To connect a branch soil/waste pipeline to the main vertical pipeline at an angle of 45°. Available with a door for cleaning purposes

mm	50
inch	1½"



**DOUBLE Y - PLAIN**

To connect a branch soil/waste pipeline to the main vertical pipeline at an angle of 45°

mm	75	110	160
inch	2½"	4"	6"



**DOUBLE Y - DOOR**

To connect a branch soil/waste pipeline to the main vertical pipeline at an angle of 45°. Available with a door for cleaning purposes

mm	160
inch	6"



**MULTI FLOOR TRAP - WITHOUT JALI**

To drain wastewater from bathrooms/ wash basins and convey to the main pipeline. It prevents odour

mm	110X75
inch	4" x 2½"



**GULLY TRAP - DOUBLE**

To prevent foul odours emitted from the sewer from reaching buildings and apartments

mm	160X110
inch	6" x 4"



**SQ. GULLY TRAP - WITH & W/O JALI**

To prevent foul odours emitted from the sewer from reaching buildings and apartments

mm	110	110
inch	(WITH JALI)	(W/O JALI)
	4"	4"



**HEIGHT RISER (6")**

For multiple draining i.e. bathrooms, washbasin, washing machine and bathtub. It has three additional inlets provided with a socket plug that can be opened as and when required. Used when height adjustments are required

mm	110X75X50	110X50X40
inch	4" x 2½" x 1½"	4" x 1½" x 1¼"



**MULTI FLOOR TRAP - WITH JALI**

To drain wastewater from bathrooms/ wash basins and convey to the main pipeline. It prevents odour

mm	110X75
inch	4" x 2½"



**S - TRAP**

To create a water seal and ensure efficient functioning of the drainage system

mm	110X110	125X110
inch	4" x 4"	4½" x 4"



### MULTI FLOOR TRAP - SQUARE JALI

To arrest debris and waste

mm	110
inch	4"



### PIPE CLIP

To fix/secure the pipeline to a wall or a flat surface

mm	75	90	110	160
inch	2½"	3"	4"	6"



### MULTI FLOOR TRAP - 7" HEIGHT

For multiple draining i.e. bathrooms, washbasin, washing machine and bathtub. It has three additional inlets provided with socket plug that can be opened as and when required. It prevents odour

mm	110X75
inch	4" x 2½"



### VENT COWL

To allow foul gases generated in the system to escape. It is used as a cap on top of the vertical line

mm	50	63	75	90	110	160
inch	1½"	2"	2½"	3"	4"	6"



### NAHANI TRAP - W/O JALI SINGLE PIECE

To drain wastewater from bathrooms, wash basins and convey to the main pipeline. It prevents odour

mm	110X63	110X75	110X90	110X110
inch	4" x 2"	4" x 2½"	4" x 3"	4" x 4"



### WC CONNECTOR

To connect a WC pan to the soil pipe

mm	110 (1.5 FT)	110 (2.0 FT)
inch	4"	4"



### NAHANI TRAP - JALI (ONLY JALI)

To arrest debris & waste

mm	110
inch	4"



### WC CONNECTOR - BEND

To connect a WC pan to the soil pipe

mm	125X110
inch	4½" x 4"



### FLOOR TRAP

To drain wastewater from the bathroom, wash basins and convey to the main pipeline. It prevents odour

mm	110X63	110X75
inch	4" x 2"	4" x 2½"




### WC CONNECTOR - STRAIGHT

To connect a WC pan to the soil pipe


mm	125X110
inch	4½" x 4"






**SOCKET PLUG**  
To plug the socket end of the pipe and fittings

mm	75	110
inch	2½"	4"




**DOOR CAP**  
To close the access opening

mm	75	110	160
inch	2½"	4"	6"




**P - TRAP**  
To create a water seal and ensure efficient functioning of the drainage system

mm	75X75	110X110	125X110
inch	2½" x 2½"	4" x 4"	4½" x 4"




**LIP SEAL  
(FOR WC CONNECTOR / TRAP)**  
Lip Seals are used to provide leakproof joints between the sanitation fixtures and various traps (P, Q and S)

mm	125
inch	4½"



**Q - TRAP**  
To create a water seal and ensure efficient functioning of the drainage system

mm	110X110	125X110
inch	4" x 4"	4½" x 4"




**END PLUG FOR MFT**  
To seal the end of an MFT opening

mm	50
inch	1½"




**MFT PARTITION PLATE WITH CAP**  
Multi Floor Trap accessory

mm	110
inch	4"




**PAN CONNECTOR - STRAIGHT**  
To connect a WC Pan to the soil pipe.

mm	125X110
inch	4½"X4"




**BEND 45° - SINGLE SOCKET**  
To collect wastewater from the internal pipeline and divert it to the main pipeline.

mm	160
inch	6"




**PAN CONNECTOR - OFFSET-18MM**  
To connect a WC Pan to the soil pipe.

mm	125X110
inch	4½"X4"



**RED. BUSH (ECCENTRIC)**  
To reduce the internal diameter of both the fitting and the main pipe.

mm	110X75
inch	4"X2½"



**PAN CONNECTOR - OFFSET-40MM**  
To connect a WC Pan to the soil pipe.

mm	125X110
inch	4½"X4"

# SWR PIPES WITH INTEGRATED RINGS

SWR pipes and fittings are generally exposed to external surfaces and sunlight as they are not concealed. Some areas have a large diurnal temperature variation ranging between 5°C to 20°C, which naturally leads to the expansion and contraction of pipes. This thermal expansion should be taken into consideration while designing any sanitation system.

Since the expansion and contraction mostly occurs in vertical lines, our SWR pipes with integrated rings are the most suitable for a vertical stack. It is necessary to maintain an expansion gap at the rubber ring joints to allow movement of pipes due to thermal expansion.

Measure the socket length with a measuring tape and mark the pipe accordingly. During installation, push the pipe firmly into the socket, which is fitted with an integrated ring, until the gap between the mark on the spigot and the socket is approximately 10mm, allowing for thermal expansion.

Finolex recommends Selfit jointing for all horizontal wastewater lines. Selfit fittings make the system cost effective, without impairing performance. Horizontal pipes require closer support compared to vertical pipes. Pipe brackets/pipe clips must be used to anchor expansion joints.

## PIPE CLIP SUPPORT SPACING DISTANCE

Pipe Size (mm)	75	90	110	160
Spacing For Horizontal Pipe Size (mtrs)	1.0	1.0	1.0	1.0
Spacing For Vertical Pipe Size (mtrs)	1.8	1.8	1.8	1.8



# FINOLEX SOLVENT CEMENT & RUBBER LUBRICANT

## SOLVENT CEMENT



PVC-U Solvent Cement for SWR (Selfit) applications (As per IS 14182 & ASTM D 2564).

ml	100	250	500	1000
Container	Tin	Tin	Tin	Tin

## RUBBER LUBRICANT



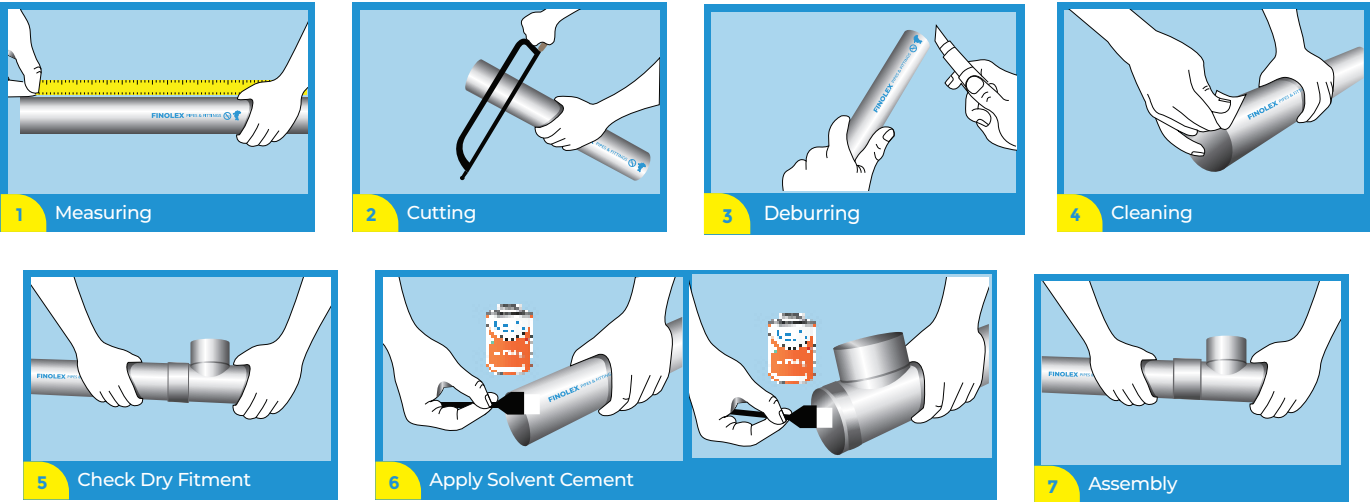
Finolex Rubber Lubricant is used for installation of SWR pipes and fittings with integrated rings.

ml	50	100	250	500	1000
Container	Plastic container				

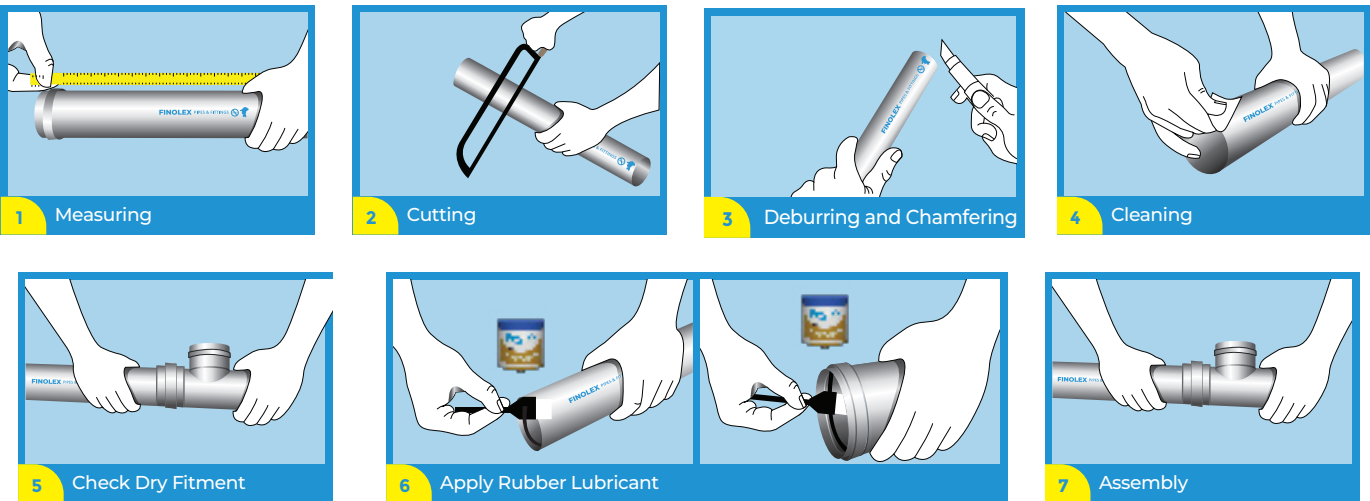


# JOINTING

## FOR SWR SELFIT PIPES AND FITTINGS



## FOR SWR PIPES AND FITTINGS WITH RUBBER RING



# CERTIFICATIONS AND APPROVALS



Pipes are manufactured  
conforming to IS 13592  
(Bureau of Indian Standards)



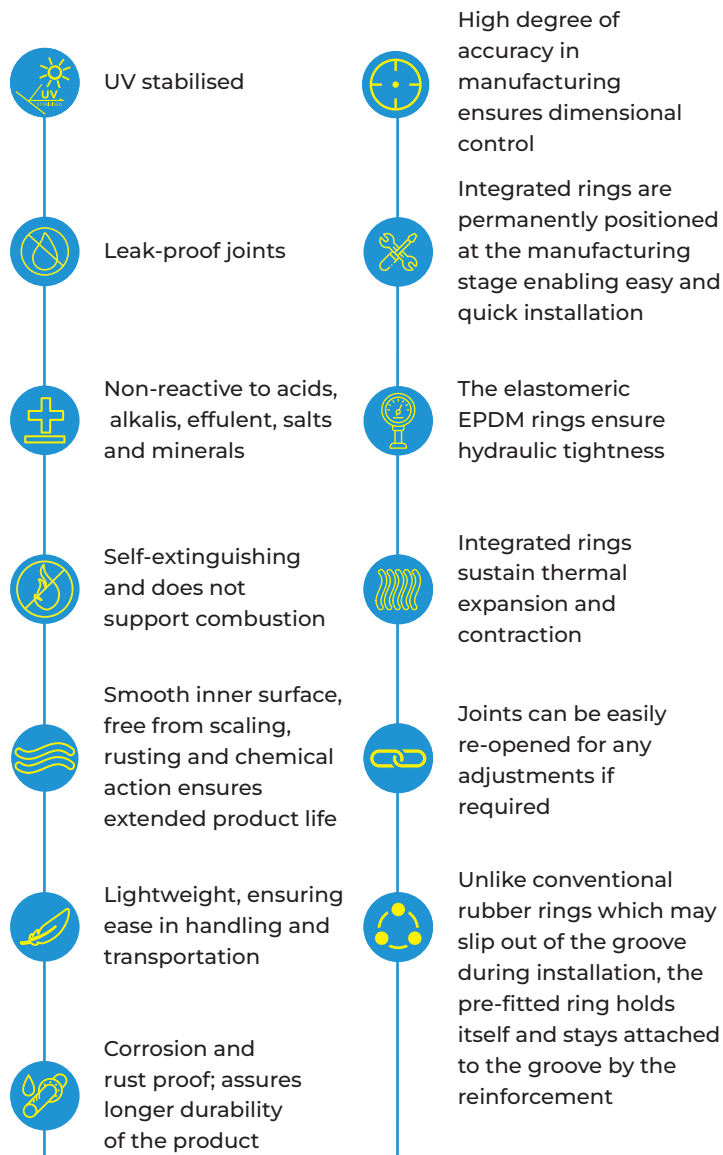
Fittings are manufactured  
conforming to IS 14735  
(Bureau of Indian Standards)



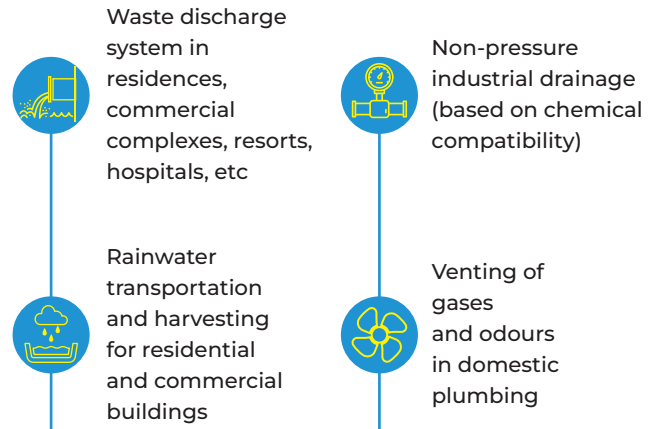
Tested and approved by  
Central Institute of Plastics  
Engineering & Technology  
(CIPET)



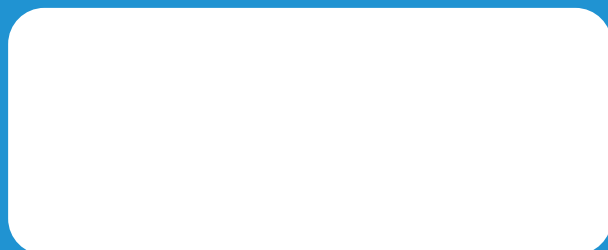
## FEATURES & BENEFITS



## APPLICATIONS



DISTRIBUTOR / DEALER STAMP



## FINOLEX INDUSTRIES LIMITED

### Registered Office:

Gate No. 399, Village Urse, Taluka Maval,  
District Pune - 410 506. Maharashtra, India.

Tel. No. : 02114 - 237251 | E-mail: [investors@finolexind.com](mailto:investors@finolexind.com)  
CIN: L40108PN198PLC024153 | Website: [www.finolexpipes.com](http://www.finolexpipes.com)

### Corporate Office:

IndiQube 'The Kode' - 11th Floor, S. No. 134, Hissa No. 1/38  
Baner Pashan Link Road, Pune - 411045. Maharashtra, India

Tel No. : 020 - 27408200  
E-mail: [care@finolexpipes.com](mailto:care@finolexpipes.com)

### Disclaimer:

Specifications are subject to change without prior notice. • The product images shown are for illustration purposes only and may not be an exact representation of the product. • The product images or other information cannot be constructed as guarantee or suitability for a particular application. • Warranty applicable only for manufacturing defects when products are installed as per our standard guidelines and usage. • Warranty is not applicable if any other brand's products are used in combination with Finolex products. • In any case, the manufacturer/seller's liability towards any claim is limited to replacement of, or credit for the defective product excluding any allied or incidental expenses. The manufacturing defect should be brought to notice within 24 months from manufacturing date.

The information provided in this catalogue, including but not limited to product descriptions, specifications, and images, is subject to change without prior notice. We endeavour to ensure the accuracy of the information presented; however, actual products may vary from the images and descriptions depicted. Discrepancies in colour, design, and other specifications may occur. The information herein is provided for reference purposes only and should not be solely relied upon for purchasing decisions.

Follow us on:



For more details check our website - [www.finolexpipes.com](http://www.finolexpipes.com)